



## EmSorb MAX

Super Absorbent Dressing with **CompressaLock**  
Technology

# Confidence under pressure

Choosing the correct dressing can be challenging and no single product suits all wounds. Effective clinical outcomes depend on matching the right product, to the right patient at the right time. Emsorb MAX can be relied upon to provide an assured Exudate Management solution that performs when it matters most.



Designed for **moderate to heavily exuding wounds**



# The exudate management challenge

Exudate is a vital part of wound healing and can vary due to factors such as wound aetiology, healing physiology, environment and pathology.<sup>1</sup>

Assessment and management of exudate is key to ensuring timely wound healing without complications.<sup>2</sup>

However, when exudate management fails, healing is delayed, patients endure pain, and there is even greater pressure on clinicians and the health service.

## The consequences of poor exudate management



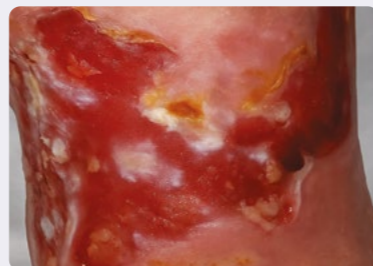
### Maceration and skin breakdown

When exudate is not managed correctly it infiltrates the skin, leading to maceration, skin breakdown, and existing wound deterioration.



### Increased risk of infection

Unmanaged exudate will lead to dressing leakage and failure, increasing risk of infection.



### More frequent dressing changes

Highly exuding wounds often require more frequent dressing changes.



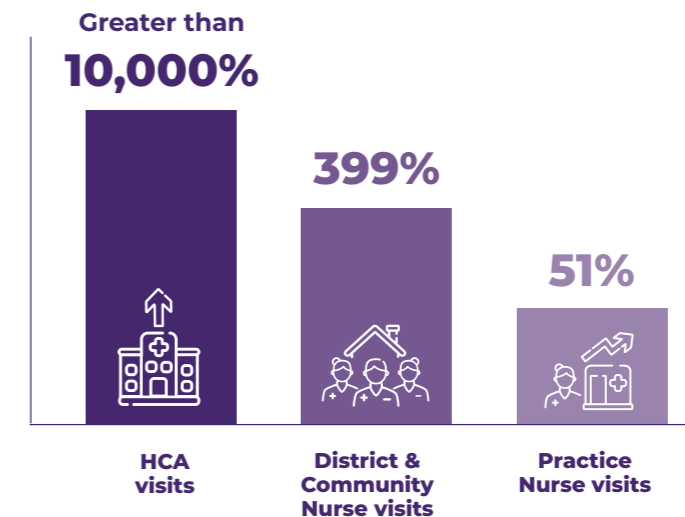
### Strain on the health service

Poor exudate management leads to poor patient outcomes, increased costs, and places further strain on healthcare systems.

# Do your dressings perform under pressure?

The first major Burden of Wounds study predicted that the prevalence of wounds would increase by 11% per annum<sup>3,4</sup>, placing increased demands on healthcare professionals to deliver improved patient care with stretched resources.

Across a five-year period, Julian Guest<sup>5</sup> subsequently reported increases of:



One of the biggest challenges for healthcare practitioners is to avoid complications of poor exudate management.

The importance of selecting an appropriate wound dressing to effectively manage heavy volumes of wound exudate is critical to achieve desired outcomes.

## The growing human and financial burden of poor exudate management



**Patients** can feel distress and loss of dignity from leakage, odour, and visible staining.



**Financial** costs can rise through more frequent dressing changes, increased nursing time and increased product usage.



**Clinicians** can feel frustrated by delayed healing and constant dressing changes that stretch their time.



In his 2021 paper Julian Guest<sup>5</sup> reported a £3 billion increase in estimated wound care costs to NHS alone. "The total annual NHS cost of managing 3.8 million patients with a wound was an estimated £8.3 billion, which denotes a 48% increase in real terms since 2012/13."

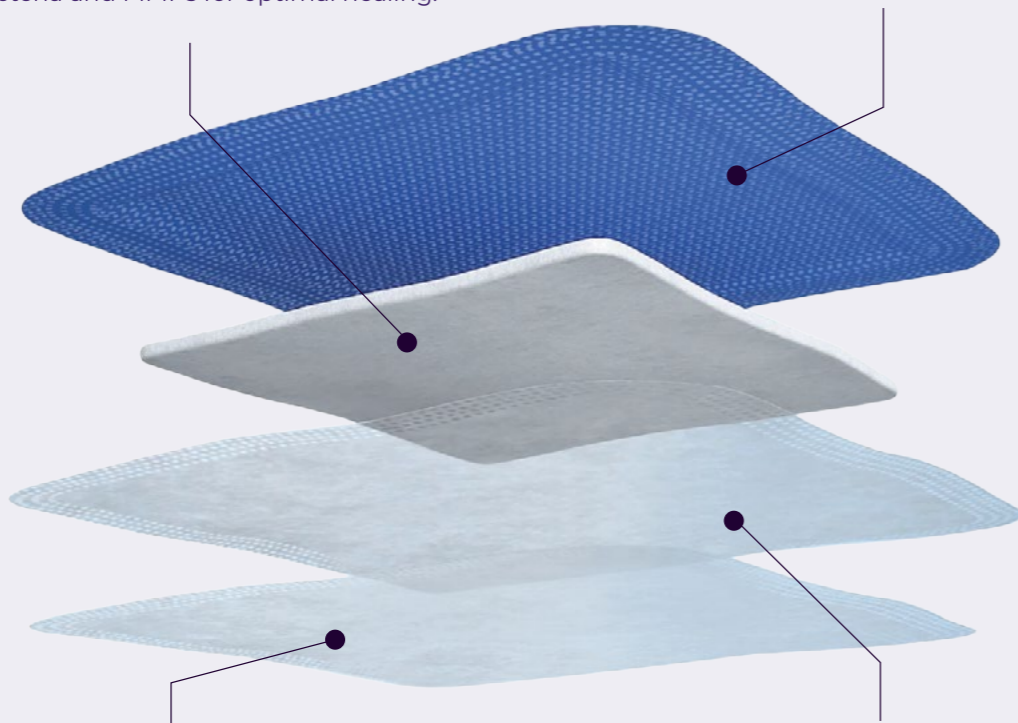
# Discover EmSorb MAX, the exudate management solution that performs under pressure

Designed for moderate to heavy exudate levels to maintain optimal moisture and protect peri-wound skin from bacteria and MMPs.<sup>6</sup>

## EmSorb MAX Backed

**Dual layer super absorbent core** comes with **CompressaLock Technology** to retain heavy exudate volumes under compression, locking in bacteria and MMPs<sup>6</sup> for optimal healing.

**SMS fluid repellent backing layer** locks in moisture, preventing strike-through while keeping compression components and clothing dry.



**Non-woven wound contact layer** is soft on skin, providing a gentle touch to the patient, minimising leakage and protecting new tissue during dressing changes.

**Non-woven diffusion layer** provides comfort and flexibility, evenly distributing exudate, preventing pooling or backflow, and maintaining dressing integrity during movement.

Also available Non-Backed



## Trust built into the dressing with

# CompressaLock Technology

Dual super absorbent layers rapidly transform fluid into a stable gel, securely locking in exudate.

## How CompressaLock Technology works...

**Outer non-woven layer** holds the core together, maintaining structure and preventing exudate or absorbent particles from escaping.

**Dual super-absorbent layers** form the main body of the dressing. Each layer contains particles that turn liquid into a gel, locking in exudate and preventing bacteria and MMPs<sup>6</sup> from returning to the wound bed.

**Non-Woven distribution layer** between the super-absorbent cores ensures even exudate spread, smooth transfer, and no backflow to the wound bed.



## Indications for use:

**Chronic and acute wounds with moderate to high levels of exudate.**

- Pressure ulcers, diabetic foot ulcers, leg ulcers.
- Post-operative wounds, superficial and partial thickness burns.
- Shallow, granulating wounds.



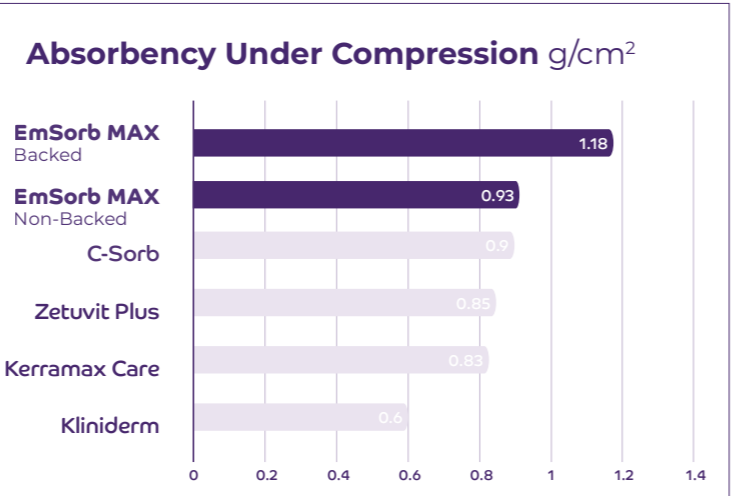
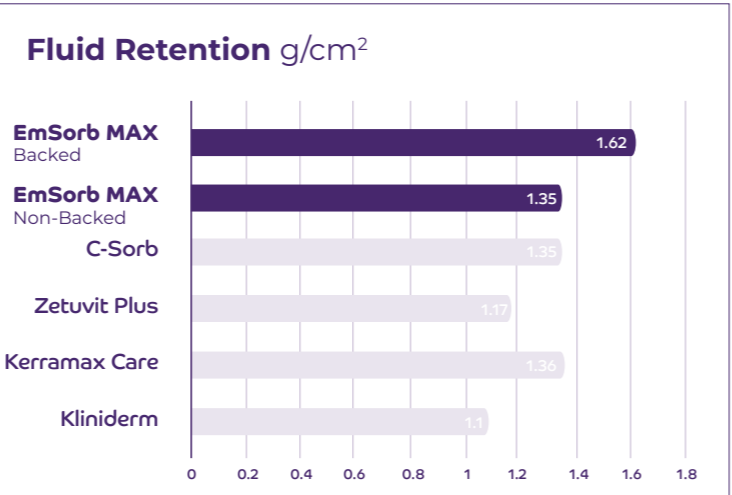
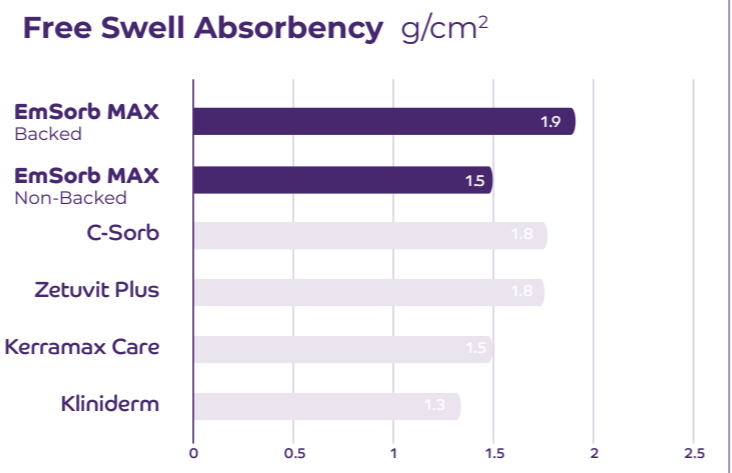
# Performance you can see, confidence you can trust

EmSorb MAX provides assurance with proven results, delivering premium performance without the premium price.

## What is the absorbency level?

### EmSorb MAX

delivers high absorbency across all sizes, from small to extra-large, ensuring consistent fluid management and lasting protection regardless of wound area.



## Case Abstract: management of complex chronic bilateral leg ulcers

### Background

- 78-year-old female with complex medical history
- Long-standing bilateral leg ulcers requiring ongoing wound management
- Right leg primarily affected by peripheral arterial disease (PAD); wounds static for over 12 months
- Left leg recently deteriorating with new skin breakdown
- Compression therapy currently paused following vascular assessment

### Wound Management Challenges

- Pain control required; currently using supervised, self-administered morphine
- Very high levels of exudate despite underlying PAD
- Need for careful wound bed and peri-wound protection
- High risk of further skin breakdown and wound deterioration
- Surrounding skin is thin, frail, and vulnerable, requiring protection

### Evaluation

- Wound management unchanged, except for direct swap of superabsorbent dressing to EmSorb MAX Backed



### Findings

EmSorb MAX Backed demonstrated effective management of very high volumes of wound exudate. The dressing functioned as intended, containing the exudate and preventing lateral spread, strikethrough and lateral leakage. Notably the dressing promoted a stable peri wound, reduced erythema, minimised plaque and debris sustaining tissue integrity. Patient comfort and concordance was elevated.

### Conclusion

These outcomes highlight the EmSorb MAX dressings capacity to support wound stability, moisture balance and patient satisfaction, confirming its value for the management of challenging very highly exuding wounds.

*Kerr, Smallman and Sproule 2025*

For the full case study and our wider clinical case series, visit [www.emsorb.com](http://www.emsorb.com) or scan the QR code



# EmSorb MAX

Super Absorbent Dressing with **CompressaLock** Technology

EmSorb MAX is comfortable, conformable and reliable, delivering premium performance at a practical price, something other dressings can't easily match.



Scan the QR code to watch EmSorb MAX in action!

Product Code	Size	Pack Quantity	NHS Supply Chain Code	PIP Code
<b>EmSorb MAX Backed</b>				
537840ZD	10cm x 10cm	10	EJE85048	437-4492
537841ZD	10cm x 20cm	10	EJE85039	437-4500
537842ZD	20cm x 20cm	10	EJE85047	437-4518
537843ZD	20cm x 30cm	10	EJE85046	437-4526
537844ZD	20cm x 40cm	10	EJE85045	437-4534
<b>EmSorb MAX Non-Backed</b>				
537965ZD	10cm x 10cm	10	EJE85037	TBC
537975ZD	10cm x 20cm	10	EJE85043	TBC
537978ZD	20cm x 20cm	10	EJE85042	TBC
537976ZD	20cm x 30cm	10	EJE85041	TBC

Request your **FREE sample** pack today

## Rociale Healthcare

Ty Mynydd, Cwm Cynon Business Park,  
Mountain Ash, CF45 4ER

**Tel:** 01443 471300  
**web:** www.emsorb.com



References: 1. Browning, White and Rowell (2016) - Comparative evaluation of the functional properties of superabsorbent dressings and their effect on exudate management, Journal of Wound Care Vol 25, No 8. 2. World Union of Wound Healing Societies consensus document (2019) - wound exudate effective assessment and management. 3. Guest JF, Ayoub N, McIlwraith T et al (2015) Health economic burden that wounds impose on the National Health Service in the UK, BMJ Open 5: e009283. doi:10.1136/bmjopen-2015-009283. 4. Guest JF, Fuller GW, Vowden P (2018) Venous leg ulcer management in clinical practice in the UK: costs and outcomes. International Wound Journal 15(1):29-37. 5. Guest JF, (2021) Burden of wounds to the NHS: What has changed since 2012/13?, Wounds UK Vol 17, No.1. 6. Assessment of MMP-2 and MMP-9 sequestration by two test dressings Report No: ROC00017. SMTL EmSorb MAX, Wound Dressing Report No: 24/7068/1. 8. NHS Clinical Evaluation Team, Clinical Review Superabsorbent Dressing 2018.